

PROJECT NAME

PROJECT TYPE

LOCATION

TIME - PERIOD

# Princess 3

Architectural Design

Agia Fylaxi

Year 2024



VIA DESIGN STUDIO PROJECT No.17

Princess 3

RESIDENTIAL BUILDING

# BUILDING CHARACTERISTICS

## PLOT LOCATION

*Princess 3 building is located in Agia Fyla area in Limassol district. It is a residential development with eight high quality apartments, located in a quiet area with easy access to the center as well as the highway.*

*It is only 950m away from the Mediterranean Hospital of Cyprus, 7.4km from the General Hospital, 9.9 km from the Mall and the new Casino, and 8.4km from the Port of Limassol.*

*The architectural design of the project perfectly combines comfort with style, aiming to improve the livelihood level of the future tenants. The apartments themselves have been thoughtfully designed to maximize space and natural light, creating a bright and inviting atmosphere.*

*Each apartment includes 2 bedrooms of which the main bedroom has En-Suite shower. All residences have an open plan living room, covered outdoor areas and their own storage and parking space on the ground floor level.*

*With its high quality construction, ideal location, luxurious amenities, and thoughtful design, these apartments are an exceptional investment opportunity.*



# Princess 3



EXTERIOR - DIGITAL DESIGN

LIMASSOL - AGIA FYLA



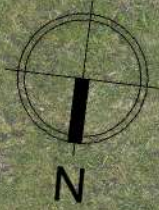
# Princess 3

## *Architectural Plans*



**Princess 3**  
*Architectural Plans*

FIRST FLOOR

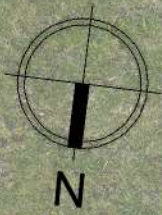


**Princess 3**  
*Architectural Plans*

SECOND FLOOR



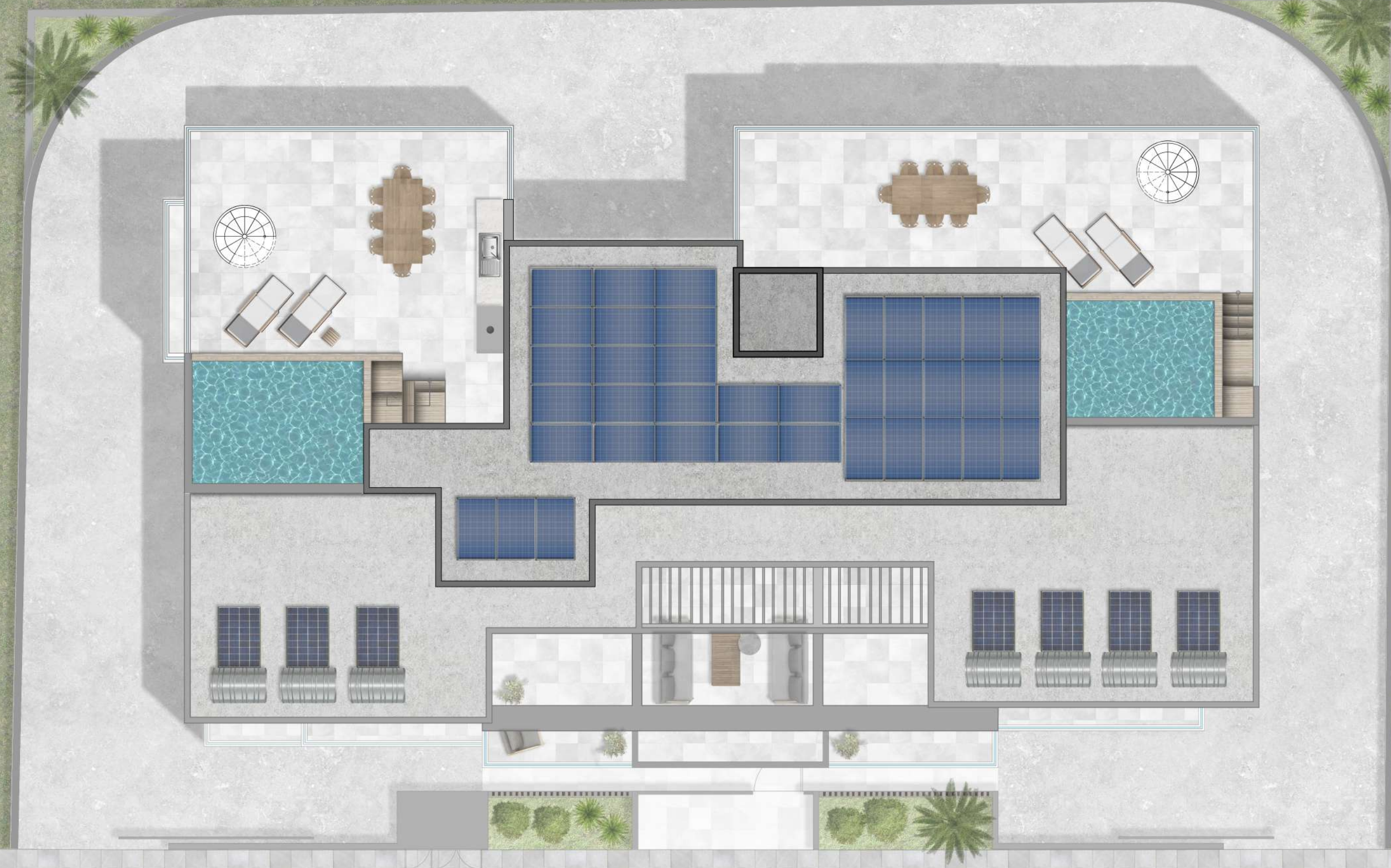
**Princess 3**  
*Architectural Plans*



# Princess 3

*Architectural Plans*

ROOF GARDEN FLOOR



**Princess 3**  
*Architectural Plans*

# Princess 3



EXTERIOR - DIGITAL DESIGN

LIMASSOL - AGIA FYLA

VIA DESIGN STUDIO

# Princess 3

EXTERIOR - DIGITAL DESIGN

LIMASSOL - AGIA FYLA



VIA DESIGN STUDIO

# Princess 3 - Roof Garden



EXTERIOR - DIGITAL DESIGN

LIMASSOL - AGIA FYLA

VIA DESIGN STUDIO

# Princess 3 - Main Entrance

LIMASSOL - AGIA FYLA

EXTERIOR - DIGITAL DESIGN



VIA DESIGN STUDIO

# Princess 3 - Bedroom



INTERIOR - DIGITAL DESIGN

LIMASSOL - AGIA FYLA

# Princess 3 - Master Bedroom

LIMASSOL - AGIA FYLA

INTERIOR - DIGITAL DESIGN



# Princess 3 - Living area



INTERIOR - DIGITAL DESIGN

LIMASSOL - AGIA FYLA

# Princess 3 - Living area



LIMASSOL - AGIA FYLA

INTERIOR - DIGITAL DESIGN

# Princess 3 - Bathroom



INTERIOR - DIGITAL DESIGN

LIMASSOL - AGIA FYLA

VIA DESIGN STUDIO

# Princess 3 - Kitchen



LIMASSOL - AGIA FYLA

INTERIOR - DIGITAL DESIGN

VIA DESIGN STUDIO

# Princess 3 - Bathroom



INTERIOR - DIGITAL DESIGN

LIMASSOL - AGIA FYLA

VIA DESIGN STUDIO

# INFORMATION BOARD

## Princess 3

	APPARTMENT 101	APPARTMENT 102	APPARTMENT 103	APPARTMENT 201	APPARTMENT 202	APPARTMENT 203	APPARTMENT 301	APPARTMENT 302
FLOOR	1st	1st	1st	2nd	2nd	2nd	3rd	3rd
BEDROOMS	2	2	2	2	2	2	2	3
AREA OF APPARTMENT	81.25 sqm	75.55 sqm	79.40 sqm	82.15 sqm	75.05 sqm	82.10 sqm	94.70 sqm	125.70 sqm
COVERED VERANDAS	22.95 sqm	17.60 sqm	30.10 sqm	20.10 sqm	21.80 sqm	13.40 sqm	29.85 sqm	25.50 sqm
UNCOVERED VERANDAS	6.85 sqm	-	9.10 sqm	18.25 sqm	29.95 sqm	20.50 sqm	2.30 sqm	-
ROOF GARDEN	-	-	-	-	-	-	71.75 sqm	69.15 sqm
STORAGE AREA	4.5 sqm	4 sqm	3.85 sqm	7.45 sqm	5.05 sqm	7 sqm	7 sqm	4.50 sqm
PARKINGS	1	1	1	1	2	2	2	2
PRICE (€)	-	-	-	-	-	-	-	-
STATUS	AVAILABLE	AVAILABLE	AVAILABLE	AVAILABLE	AVAILABLE	AVAILABLE	AVAILABLE	AVAILABLE

Princess 3

# CONTACT INFO:



VALENTINOS IOANNOU

- office@viadesignstudio.com.cy
- Tel: + 357 25317600 • Mob: +357 99356600



**CITYRESIDENCES**  
CONSTRUCTION & DEVELOPMENT LTD

- GIANNIS SAMIOTIS
- samiotis@cytanet.com.cy
- Mob: +357 99306676

